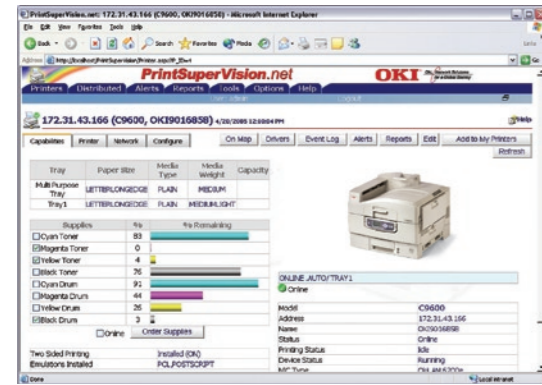
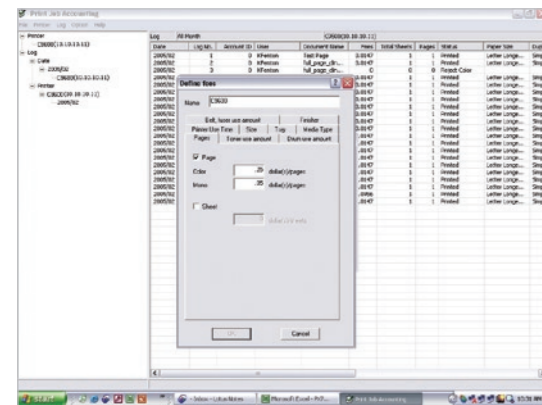


Productivity- and profit-enhancing software utilities, too.



**PrintSuperVision**  
Robust, scalable, Internet-based software components that enable administrators to access and distribute printer data and control the functionality of all the OKI Printing Solutions printers and most other SNMP-based printers on their network.



**Job Accounting Software**  
Enables tracking of color printing costs and easy monitoring and control of printer usage—with both Server and Client components.



**Color Matching software from OKI Printing Solutions**  
An accurate color matching/job flow management program that enables users to match the colors on their monitor with their color output, and create ICC input/output profiles for printers, monitors and scanners.

## C9600 Series

### Specifications

#### Performance

- **Print Speed:** Up to 36 ppm Color; up to 40 ppm Mono<sup>1</sup>
- **Time to First Page:** 10.5 sec. Color; 9 sec. Mono<sup>1</sup>
- **Warm-Up Time:** 85 sec. or less from Power On
- **Resolution:** ProQ2400 Multilevel technology; up to 1200 x 600 dpi resolution
- **Processor:** 720 MHz PowerPC 750FX
- **Reliability/Duty Cycle:** 150,000 pages/month

#### Standard Productivity Features

- **Job Accounting:** Track precise count of color and mono pages printed by individual or department<sup>2</sup>
- **PrintSuperVision:** Web-based software, printer management tool
- **Storage Device Manager:** Stores and manages forms, letterheads, logos and fonts<sup>2</sup>
- **Auto Media Detect:** Automatic paper weight detection
- **Auto Paper Tray Select:** Automatically detects paper size

#### Color Controls

- **Color Management:** Color Matching software and Color Correct from OKI Printing Solutions, PS Gamma Adjuster, PostScript® CRD, Windows® ICM, Resident ICC Input/Output Profiles (also create, download to printer, and manage new profiles). Supports color management systems that utilize ICC profiles (Apple®, ColorSync®, MicroSoft® ICM, Adobe® applications, QuarkXPress®, CorelDraw®)
- **Ink Simulations:** SWOP®, Euroscale and others
- **Color Matching Modes:** sRGB, Monitor Simulations, Digital Camera

#### Compatibility

- **Emulations:** PCL 5c, PCL 6, Adobe PostScript 3™; Direct PDF Printing (Windows environment only)<sup>2</sup>
- **Operating Systems:** Windows® XP Professional, XP Home, 2003 server; Windows 98, 98 SE, ME, NT, NT® 4.0 Workstation, NT 4.0 Server (SP6 or later), 2000 Workstation (SP3 or later), 2000 Professional (SP3 or later), 2000 Server (SP3 or later), 2000 Advanced Server (SP3 or later); Citrix® MetaFrame® – Windows 2000 Server (ServicePack4) with Citrix MetaFrame XP® Presentation Server Feature Release 3, Windows Server 2003 Standard Edition with Citrix MetaFrame XP Presentation Server Feature Release 3; Mac® OS 9.x, Mac OS 10.2.4 – 10.4.2
- **Network & Protocols:** 10/100 Base TX Ethernet card with internal Web server for printer and network card setup and management; includes POP3/APOP and SMTP Mail client for submission of print jobs and for alerts. All major network protocols supported – TCP/IP, Netware and Ethernal. TCP/IP includes ARP, IP, ICMP, TCP, UDP, LPR, FTP, TELNET, HTTP(IPP), BOOTP, DHCP, SNMP, DNS, SSL/TLS, JetDirect protocols; Netware includes 3.x, 4.x, 5.x and 6 with full NDS and NDPS support – PServer, RPrinter, NDPS supported via dedicated OKI NDPS Gateway. EtherTalk: ELAP, AARP, DDP, AEP, NBP, ZIP, RTMP, ATP, PAP. Wireless Option supports 802.11g.

#### Memory

- **Standard RAM:** C9600n – 256 MB; C9600hdn – 384 MB
- **Maximum RAM:** 1,024 MB
- **Flash Memory:** 4 MB standard
- **Hard Disk Drive:** 20 GB (standard on C9600hdn, optional on C9600n)

Specifications are subject to change without notice.

© 2005 OKI Data Americas, Inc. OKI Reg. T.M., M.D. M.R., OKIcare, OkiLAN Reg. T.M., OKI Electric Industry Co., Ltd. Single Pass Color T.M. and design. Reg. T.M., OKI Data Corp. SynFlex T.M., OKI Data Americas, Inc. SWOP T.M., SWOP, Inc. Adobe, PostScript, Acrobat Reg. T.M., PostScript 3 T.M., Adobe Systems Inc. Microsoft, Windows, Windows NT Reg. T.M., Microsoft Corp. PCL Reg. T.M., Hewlett-Packard Co. Mac, ColorSync Reg. T.M., Apple Computer Inc. QuarkXPress T.M., Quark Inc. CorelDraw Reg. T.M., Corel Corp. Intel Reg. T.M., Intel Corp. Energy Star Reg. T.M., U.S. EPA. Solaris, Reg. T.M., Sun Microsystems, Inc. Citrix, MetaFrame, MetaFrame XP Reg. T.M., Citrix Systems, Inc. USB-Logo T.M. Universal Serial Bus Implementers Forum, Inc.

#### Interface

- **Standard Connectivity:** 10/100-TX Ethernet, High-speed USB v2.0, Parallel
- **Optional Connectivity:** Wireless Network Card (802.11g)

#### Paper Handling

- **Standard Input:** 760 sheets (530-sheet universal tray + 230-sheet multi-purpose tray)
- **Optional Input:** 2nd/3rd universal tray (530 sheets each); High-Capacity Feeder (1,590 sheets)
- **Maximum Capacity:** 2,880 sheets (Printer + 2nd tray + High Capacity Feeder + Multi-Purpose Tray)
- **Paper Sizes Supported:** Tabloid extra (12" x 18"), tabloid, legal, letter, executive, index cards, A3, A4, A5, A6, B5, C5, DL, Com 10, Monarch envelopes, and banners (up to 12.9" by 47.24")
- **Paper Weight:** Trays 1 thru 5 support 17 lb.–57.5 lb. bond (64–216 gsm); Multi-purpose tray supports 17 lb.–72 lb. bond (64–270 gsm); duplex supports 20 lb.–32 lb. bond (75–120 gsm)
- **Duplex (2-sided printing):** Standard on C9600hdn; optional on C9600n

#### Typesfaces

- **Printer Fonts:** 86 scalable PCL fonts, 1 bitmap font, 10 TrueType® fonts, 136 Adobe PostScript Type 1 fonts, OCR A/B, USPS Barcode

#### Environmental

- **Size (WxDxH):** 25.8" x 24.4" x 18.2" (65.5 cm x 62.0 cm x 46.2 cm)
- **Weight:** 152 lb. (69.0 kg)
- **Power Consumption:** Typical 750W, Peak 1500W, Idle 200W (average), Power Save <45W
- **Acoustic Noise:** Operating: 54dB(A) or less, Standby: 40dB(A) or less, Power save: 40dB(A) after 30 minutes (background level)
- **Energy Star:** Yes

#### Warranty

- **Printer:** 1-Year limited On-Site warranty<sup>3</sup>, parts and labor
- **Digital LED Printhead:** 5-Year limited warranty

**Important Consumables Information:** This product has been designed and engineered to operate only with genuine OKI Printing Solutions consumables. Use of non-genuine consumables will result in the loss of certain printer enhancements, such as Auto Color Balance and the Toner Sensor gauge.

**For more information** on Digital Color printers and supplies from OKI Printing Solutions, including OKIcare® Extended Service Programs: **1.800.OKI.DATA (800.654.3282)**.

<sup>1</sup> Published performance results based on laboratory testing. Individual results may vary.

<sup>2</sup> Requires hard disk drive.

<sup>3</sup> Available in the U.S. and Canada only.

<sup>4</sup> Estimated life at 5% coverage on letter-size paper (printers ship with 7,500-page standard toner cartridge).

<sup>5</sup> Estimated life, continuous printing (will vary depending on number of printed pages per job).



#### OKI DATA AMERICAS, INC.

USA  
2000 Bishops Gate Blvd.  
Mount Laurel, NJ 08054-4620  
Tel: 800.OKI.DATA (800.654.3282)  
Fax: 856.222.532 0

Canada  
2735 Matheson Blvd. East  
Mississauga, Ontario L4W 4M8  
Tel: 905.238.4250  
Fax: 905.238.4421

Latin America and Mexico  
2000 Bishops Gate Blvd.  
Mount Laurel, NJ 08054-4620  
Tel: 856.231.0002  
Fax: 856.222.5071

[WWW.OKIPRINTINGSOLUTIONS.COM/US](http://WWW.OKIPRINTINGSOLUTIONS.COM/US)

**OKI**  
PRINTING SOLUTIONS

## C9600 Series



Brilliant color. Unmatched media flexibility.

C9600n  
C9600hdn



**OKI**  
PRINTING SOLUTIONS



## Your business calls for productivity and versatility. That's what you get—and more—with the C9600 Series!

### Highlights:

- Color output at up to 36 ppm, Mono (black & white) at up to 40 ppm<sup>1</sup>
- Single Pass Color™ Digital technology for printing on media up to 270 gsm
- Tabloid-extra/A3 (12" x 18"); prints on banner sheets up to 12.9" wide by 47.24"
- ProQ2400 Multi-level technology for sharper detail and rich color depth; up to 1200 x 600 dpi resolution
- High-capacity, 2-piece consumables for low Total Cost of Ownership
- 720 MHz PowerPC 750FX processor
- Generous standard RAM, upgradable to 1 GB
- Holds up to 2,880 sheets with options
- Job Accounting software<sup>2</sup> and Web-based printer management utility standard
- Direct PDF Printing – print .pdf files without Adobe® Acrobat® or Acrobat Reader<sup>2,3</sup>
- Available with duplexer<sup>3</sup>, 20 GB Hard Disk Drive<sup>3</sup>, and Finisher/Stapler
- 1-Year On-Site limited warranty<sup>4</sup> on printer; 5-Year limited warranty on LED printheads
- Live, toll-free technical support 24/7/365<sup>4</sup>

### Color printing with exceptional paper handling flexibility

Digital color printers from OKI Printing Solutions provide high-quality, tabloid-extra (12" x 18") color output.

With the C9600 Series Digital Color printers, you can improve the quality of your output and increase productivity—even as you lower your expenses.

These color printers are the efficient and affordable answer, especially if tabloid-size newsletters and brochures, ad layouts, large illustrations, banners or specialty media are essential parts of your business.

#### Your total in-house printing solution.

No more having to run down to the corporate or neighborhood copy center every time you need color documents. From postcard- to banner-size documents up to 12.9" by 47.24", you can simply print them in-house.

C9600 Series printers come with Color Matching software from OKI Printing Solutions and Auto Color Balance, to ensure that color output remains accurate and consistent from start to finish. And features like Auto Media Detect will automatically adjust the printer to your required media type.

Single Pass Color™ Digital technology and long-lasting, individually replaceable toner cartridges and image drums translate into fewer interventions—for increased productivity and a lower cost per page than competitive color printers and, especially, outside print-and-copy services. Further, C9600 Series color printers have a cost per black & white page comparable to that of most mono laser printers—so you can use them for all your business printing.

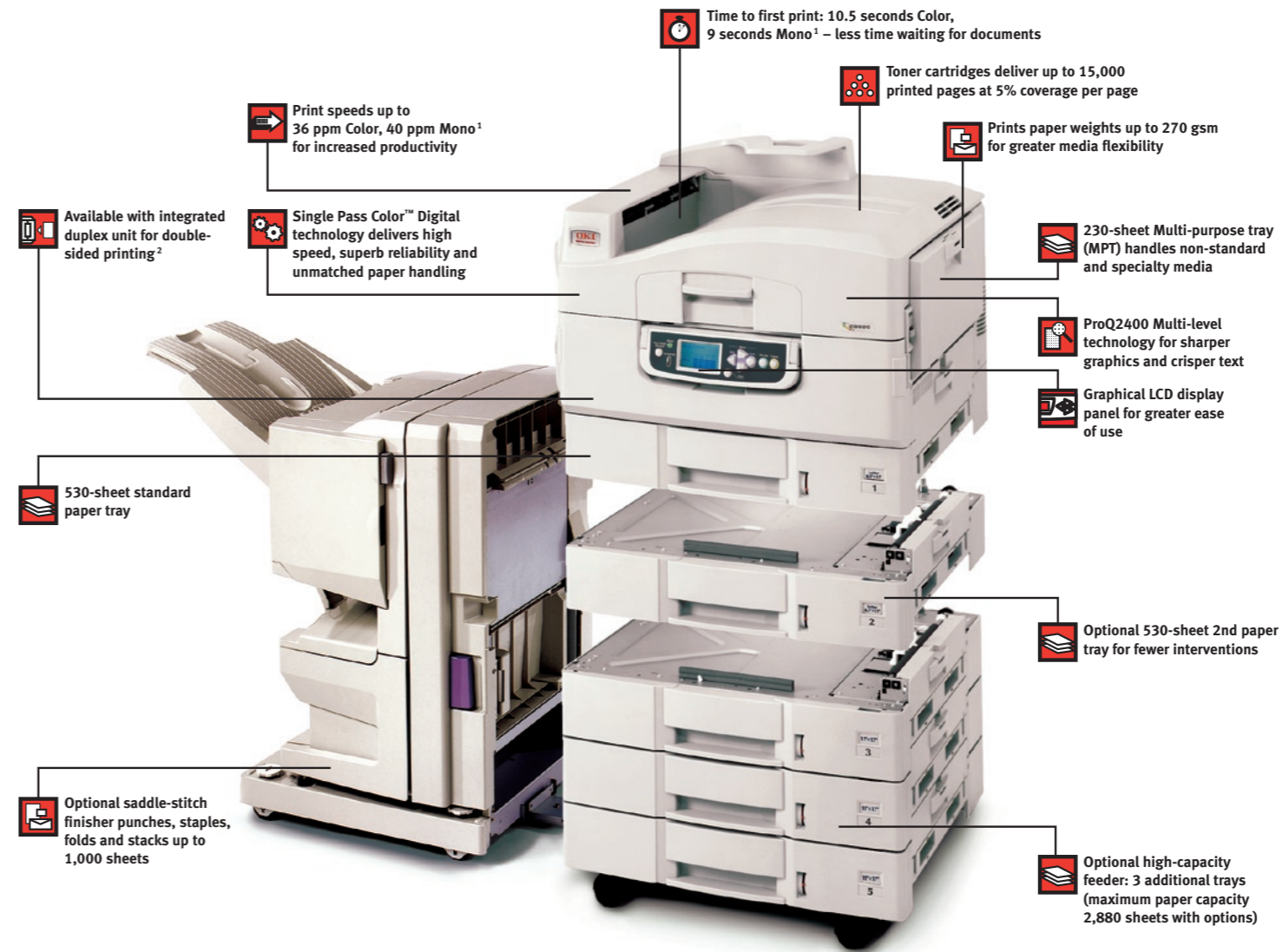
#### Connectivity and more.

C9600 Series printers can be connected to the network (PC- or Mac®-based) via a 10/100 Base-T internal print server card or an optional wireless network interface card. They also feature high-speed USB v2.0 and parallel interfaces.

Both C9600 Series models are equipped with Job Accounting software<sup>2</sup> that allows for tracking of color and mono pages, the types and quantities of paper used, and a record of printing activity by individual or department.

So go on, get as creative as you like—and expect the superlative capabilities of C9600 Series Digital Color printers from OKI Printing Solutions to make you look great.

### C9600 Series At-a-Glance



The easy-to-read, easily accessible operator panel of the C9600 Series tilts up for user convenience, and features a bright text-and-graphics LCD display.



C9600 Series Operator Panel in "flat" or "down" position.



C9600 Series Operator Panel can be tilted upwards to various angles (up to 90°) for greater convenience.

### Unmatched media flexibility: print letterhead, card stock, even 4-foot banners – up to 270 gsm!

Introducing the Signage Media Collection from OKI Printing Solutions. The C9600 Series prints them all—beautifully!



Premium Card Stock  
3 different weights;  
uniformly smooth surface

SynFlex™ Paper  
Water-resistant and  
tear-resistant



Bright White  
Proofing Sheets  
In 8.5" x 11", 11" x 17" (tabloid)  
and 12" x 18" (tabloid-extra)



Banner Paper  
12.9" x 35.4" or 8.5" x 35.4" –  
ideal for retail signage

For more information or to order from the Signage Media Collection: 1.800.OKI.DATA (800.654.3282).

<sup>1</sup> Published performance results based on laboratory testing. Individual results may vary.

<sup>2</sup> Requires hard disk drive.

<sup>3</sup> Standard on C9600hdn model.

<sup>4</sup> Available in the U.S. and Canada only.

<sup>1</sup> Published performance results based on laboratory testing. Individual results may vary.

<sup>2</sup> Standard on C9600hdn.