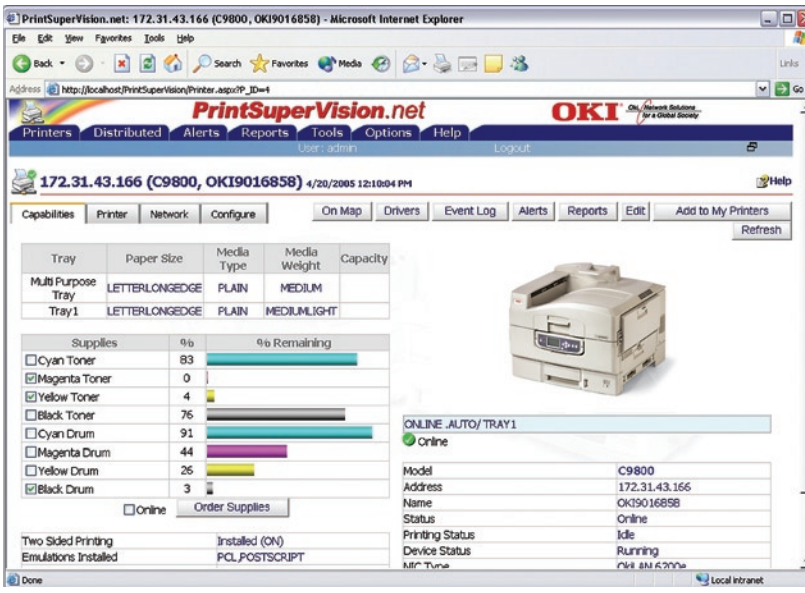
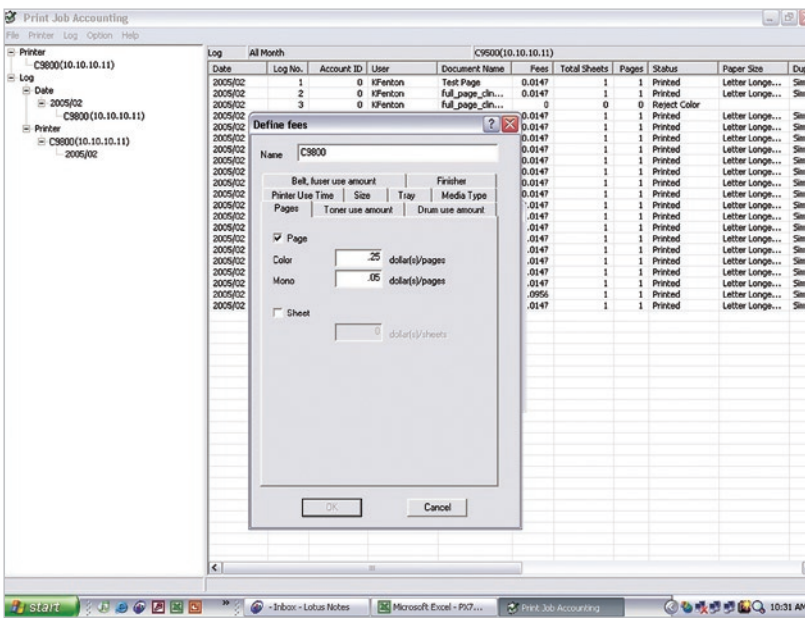


OKI Printing Solutions: High performance comes standard.

Productivity- and profit-enhancing software utilities: monitor your printer's status and manage its use.



PrintSuperVision
Robust, scalable, Internet-based software components that enable administrators to access and distribute printer data and control the functionality of all the OKI Printing Solutions printers and most other SNMP-based printers on their network.



Job Accounting Software
Enables tracking of color printing costs and easy monitoring and control of printer usage—with both Server and Client components.

Unmatched media flexibility: print letterhead, card stock, even 4-foot banners – up to 270 gsm!

Introducing the Signage Media Collection from OKI Printing Solutions. The C9800 Series prints them all—beautifully!



Banner Paper
12.9" x 35.4" or 8.5" x 35.4" – ideal for retail signage

For more information or to order from the Signage Media Collection: **1.800.OKI.DATA** (800.654.3282).

C9800 Series

Specifications

- Performance**
- **Print Speed:** Up to 36 ppm Color, 40 ppm Mono¹
 - **Time to First Page:** 10.5 sec. Color; 9 sec. Mono¹
 - **Warm-Up Time:** 110 sec. or less from Power On
 - **Resolution:** ProQ4800 Multi-level technology; up to 1200 x 1200 dpi resolution
 - **Processor:** 1 GHz TM5800-1000
 - **Reliability/Duty Cycle:** 150,000 pages/month
- Standard Productivity Features**
- **EFI Utilities:** ColorWise™ Pro Tools; Command WorkStation™ 4; DocBuilder™; Freeform™; Downloader™
 - **Job Accounting:** Track precise count of color and mono pages printed by individual or department
 - **Print Supervision:** Web-based software printer management tool
 - **Storage Device Manager:** Stores and manages forms, letterheads, logos and fonts
 - **Auto Media Detect:** Automatic paper weight detection
 - **Auto Paper Tray Select:** Automatically detects paper size

- Color Controls**
- **Color Management:** EFI ColorWise Pro Tools; download to printer and manage new ICC Input/Output profiles
 - **Ink Simulations:** SWOP®, Euroscale and others
 - **Color Matching Modes:** sRGB, Monitor Simulations
 - **Spot Color Matching:** PANTONE® Color Matching System

- Compatibility**
- **Emulations:** PCL 5c, PCL 6, Adobe PostScript 3™; Direct PDF Printing (Windows environment only)
 - **Operating Systems:** Windows® XP Professional, XP Home, 2003 server; Windows 98, 98 SE, ME, NT® 4.0 Workstation, NT 4.0 Server (SP6 or later), 2000 Workstation (SP3 or later), 2000 Professional (SP3 or later), 2000 Server (SP3 or later), 2000 Advanced Server (SP3 or later); Citrix® MetaFrame® – Windows 2000 Server (ServicePack4) with Citrix MetaFrame XP® Presentation Server Feature Release 3, Windows Server 2003 Standard Edition with Citrix MetaFrame XP Presentation Server Feature Release 3; Mac® OS 9.2, Mac OS 10.2.4 thru 10.3.8
 - **Network & Protocols:** 10/100 Base TX Ethernet card with internal Web server for printer and network card set-up and management; includes POP3 and SMTP Mail client for submission of print jobs and for alerts. All major network protocols supported – TCP/IP, Netware and Ethertalk. TCP/IP includes ARP, IP, ICMP, TCP, UDP, LPR, FTP, HTTP(IPP), BOOTP, DHCP, SNMP, DNS, JetDirect protocols; Netware includes 3.x, 4.x, 5.x and 6 with full NDS and NDPS support – PServer, NDPS supported via dedicated OKI NDPS Gateway, EtherTalk: ELAP, AARP, DDP, AEP, NBP, ZIP, RTMP, ATP, PAP.

- Memory**
- **Standard/Max RAM:** 1,024 MB (1 GB)
 - **Flash Memory:** 4 MB standard
 - **Hard Disk Drive:** 20 GB standard
- Interface**
- **Standard Connectivity:** 10/100-TX Ethernet High-speed USB v2.0, Parallel

Specifications are subject to change without notice.
© 2005 Oki Data Americas, Inc. OKI Reg. T.M., M.D. M.R., OKIcare, OkilAN Reg. T.M., Oki Electric Industry Co., Ltd. Single Pass Color T.M. and design Reg. T.M., Oki Data Corp. Command Performance, SynFlex T.M., Oki Data Americas, Inc. Fiery Reg. T.M., Command WorkStation, EFI DocBuilder, Freeform, EFI Downloader, Electronics for Imaging, Inc. SWOP T.M., SWOP Inc. PostScript Reg. T.M., PostScript 3 T.M., Adobe Systems Inc. Microsoft, Windows, Windows NT Reg. T.M., Microsoft Corp. PCL Reg. T.M., Hewlett-Packard Co. Mac Reg. T.M., Apple Computer Inc. Energy Star Reg. T.M., U.S. EPA. Solaris, Reg. T.M., Sun Microsystems, Inc. Citrix, MetaFrame, MetaFrame XP Reg. T.M., Citrix Systems, Inc. USB-Logo T.M. Universal Serial Bus Implementers Forum, Inc.

- Paper Handling**
- **Standard Input:** 760 sheets (530-sheet universal tray + 230-sheet multi-purpose tray)
 - **Optional Input:** 2nd/3rd universal tray (530 sheets each); High-Capacity Feeder (1,590 sheets)
 - **Maximum Capacity:** 2,880 sheets (Printer + 2nd tray + High Capacity Feeder + Multi-Purpose Tray)
 - **Paper Sizes Supported:** Tabloid extra (12" x 18"), tabloid, legal, letter, executive, index cards, A3, A4, A5, A6, B5, C5, DL, Com 10, Monarch envelopes, and banners (up to 12.9" by 47.24")
 - **Paper Weight:** Trays 1 thru 5 support 17 lb.–57.5 lb. bond (64–216 gsm); Multi-purpose tray supports 17 lb.–72 lb. bond (64–270 gsm); duplex supports 20 lb.–32 lb. bond (75–120 gsm)
 - **Duplex (2-sided printing):** Standard on C9800hnd; optional on C9800hn

- Typefaces**
- **Printer Fonts:** 86 scalable PCL fonts, 1 bitmap font, 10 TrueType® fonts, 136 Adobe PostScript Type 1 fonts, OCR A/B, USPS Barcode
- Environmental**
- **Size (WxDxH):** 25.8" x 24.4" x 18.2" (65.5 cm x 62.0 cm x 46.2 cm)
 - **Weight:** 152 lb. (69.0 kg)
 - **Power Consumption:** Typical 750W, Peak 1500W, Idle 200W (average), Power Save 45W
 - **Acoustic Noise:** Operating: 54dB(A) or less, Standby: 40dB(A) or less, Power save: 40dB(A) after 30 minutes (background level)
 - **Energy Star:** Yes
- Warranty**
- **Printer:** 1-Year limited On-Site warranty², parts and labor
 - **Digital LED Printhead:** 5-Year limited warranty

Important Consumables Information: This product has been designed and engineered to operate only with genuine OKI Printing Solution consumables. Use of non-genuine consumables will result in the loss of certain printer enhancements, such as Auto Color Balance and the Toner Sensor gauge.

For more information on Digital Color printers and supplies from OKI Printing Solutions, including OKIcare® Extended Service Programs: **1.800.OKI.DATA** (800.654.3282):

¹ Published performance results based on laboratory testing. Individual results may vary.
² Available in the U.S. and Canada only.
³ Estimated life at 5% coverage on letter-size paper (printers ship with 7,500-page standard toner cartridge).
⁴ Estimated life, continuous printing (will vary depending on number of printed pages per job).
⁵ For C9800 Series printers only, in normal office environments: near 71° F, 40% to 50 % RH



OKI DATA AMERICAS, INC.
USA
2000 Bishops Gate Blvd.
Mount Laurel, NJ 08054-4620
Tel: 800.OKI.DATA (800.654.3282)
Fax: 856.222.532 0

Canada
2735 Matheson Blvd. East
Mississauga, Ontario L4W 4M8
Tel: 905.238.4250
Fax: 905.238.4421

Latin America and Mexico
2000 Bishops Gate Blvd.
Mount Laurel, NJ 08054-4620
Tel: 856.231.0002
Fax: 856.222.5071

WWW.OKIPRINTINGSOLUTIONS.COM/US

C9800 Series

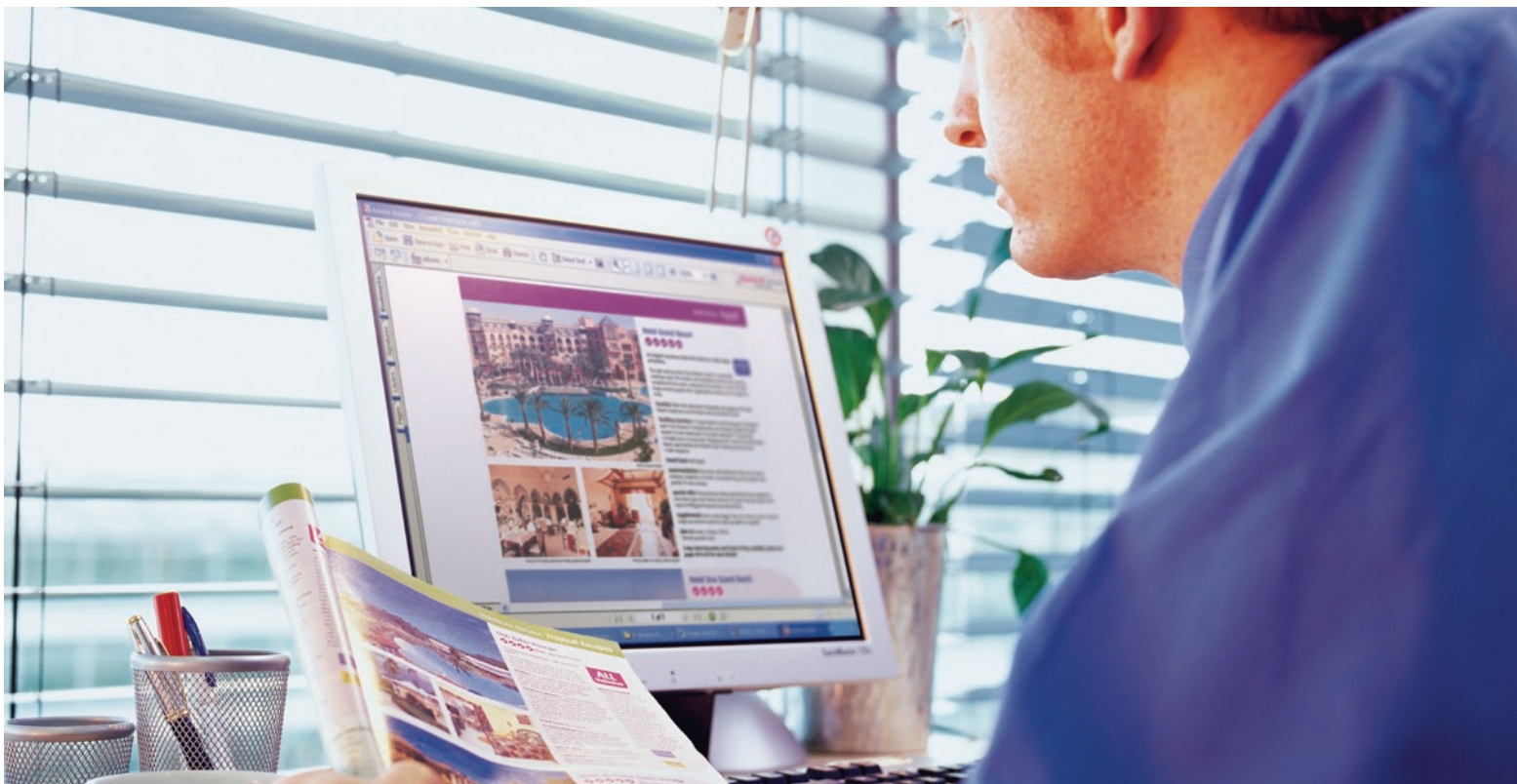


Exceptional color when accuracy counts.

C9800hn
C9800hnd

Ordering Information		Part Numbers
Description		
C9800hn, 120v (Multilingual)		62423009
C9800hn, 230v (Multilingual)		62423010
C9800hnd, 120v (Multilingual)		62423007
C9800hnd, 230v (Multilingual)		62423008
Options		
2nd and 3rd 530-sheet Paper Tray Mechanism		42831301
Duplex Unit		42797201
High-Capacity Feeder		42831501
4-Tray Finisher		70050701
5-Tray Finisher		70050801
2- /3-Hole Punch for Finisher		42872902
Printer Cabinet		70050901
EFI Profiler		70051302
ED-100 EFI Densitometer		70051301
Docbuilder Pro Kit		70051303
Supplies		
High-Capacity Toner Cartridges (Type C7)		
Cyan Toner Cartridge 15,000 pg. ³		42918903
Magenta Toner Cartridge 15,000 pg. ³		42918902
Yellow Toner Cartridge 15,000 pg. ³		42918901
Black Toner Cartridge 15,000 pg. ³		42918904
Image Drums (Type C7)		
Cyan Image Drum 42,000 pg. ⁴		42918103
Magenta Image Drum 42,000 pg. ⁴		42918102
Yellow Image Drum 42,000 pg. ⁴		42918101
Black Image Drum 42,000 pg. ⁴		42918104
Consumables		
Fuser Kit (120V) 100,000 pg. ⁴		429317
Fuser Kit (230V) 100,000 pg. ⁴		42931702
Transfer Belt 100,000 pg. ⁴		42931601
Waste Toner Box 30,000 pg. ³		42869401
Finisher Staples 15,000 count		42937601
Print Media	Sheets Per Box	
Premium Card Stock (8.5" x 11"):		
60 lb. cover	250	52205601
90 lb. index	250	52205602
110 lb. index	250	52205603
Bright White Proofing Sheets (32 lb.):		
8.5" x 11"	500	52206101
11" x 17"	500	52206102
12" x 18"	500	52206103
Premium Color Transparency Film	50	52205701
4-Up White Labels (@ 4.125" x 7")	250	52207301
Banner Paper (12.9" x 35.4")	100	52206001
Banner Paper (8.5" x 35.4")	100	52206002
SynFlex™ Paper (8.5" x 11" – Waterproof and Tear-resistant)	100	52205901
Premium Envelopes (size #10):	100	52206301
	500	52206302
Hammermill Color Laser Gloss⁵		
32 lb. (120 g/m ²)		16311-0
MeadWestvaco, Sterling Ultra Gloss Cover⁵		
100 lb. (271 g/m ²)		51743





Your work demands fast, accurate color—with the emphasis on accurate. The C9800 Series gives you precisely that!

High-volume color printing with EFI Fiery® technology— for color-centric applications.

Highlights:

- Color-accurate output at up to 36 ppm, monochrome (black & white) at up to 40 ppm¹
- Single Pass Color™ Digital technology for printing on media up to 270 gsm
- Full suite of EFI color-matching and job management utilities standard
- High-capacity, 2-piece consumables (toner and drum) for low Total Cost of Ownership
- Tabloid-extra/A3 (12" x 18"); prints banner sheets up to 12.9" wide by 47.24" long
- ProQ4800 Multi-level technology for sharper detail and rich color depth; up to 1200 x 1200 dpi resolution
- Powerful 1 GHz TM5800-1000 processor
- Generous 1 GB of standard RAM
- 20 GB Hard Disk Drive standard
- Holds up to 2,880 sheets with options
- Job Accounting software and Web-based printer management utility standard
- Direct PDF Printing – print .pdf files without Adobe® Acrobat® or Acrobat Reader
- Available with duplex², additional paper trays, and finisher/stapler
- 1-Year On-Site limited warranty on printer³;
- 5-Year limited warranty on LED printheads
- Live, toll-free technical support 24/7/365³

Digital color-matching printers from OKI Printing Solutions provide in-house, tabloid-extra color output. Color is the most effective way to add impact to your printed documents. But to stand out from the competition, your color output must be vibrant and accurate.

The C9800 Series not only produces beautiful, color-accurate documents, but does it fast, reliably and affordably. Whether for presentations, brochures, advertising layouts or promotional material, the C9800 Series is the perfect solution for your busy workgroup.

Commercial printshop performance with consistency and accuracy. The C9800 Series controller is powered by EFI Fiery technology. It provides print control and job management functionality to optimize document workflow and ensure consistently exceptional results. With the EFI Fiery controller, you can manage or preview print jobs in the queue, balance the workflow of networked devices, manage color profiles, and save templates on the printers' hard disk drive for faster processing and printing of jobs.

Multi-level printing enables the C9800 Series to deliver fine details and stunning color depth, while OKI Printing Solutions' proprietary toner

formulation lends a professional-looking light gloss finish to your printed documents.

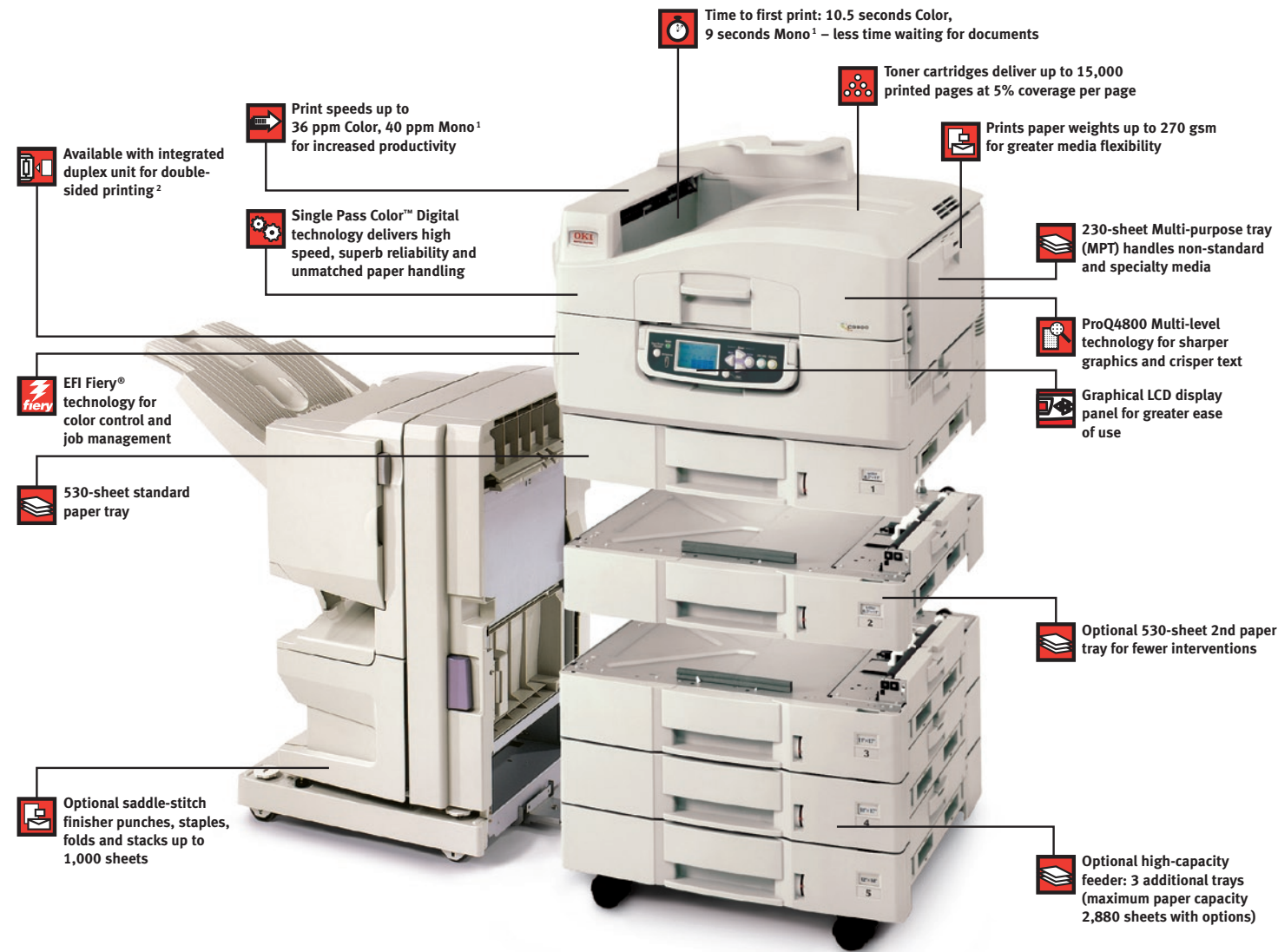
Media flexibility and cost-efficiency, too. The C9800 Series is the ideal solution for producing a wide range of documents on a variety of paper weights and sizes. Single Pass Color™ technology and the straight-through paper path of the C9800 Series allow for faster color and mono print speeds, minimal paper jams, and smooth handling. Productivity features like Auto Media Detect automatically adjust the printer to your required media type, and Auto Color Balance ensures that output remains consistent from start to finish.

All C9800 Series printers are equipped with Job Accounting software that allows tracking of color and mono pages, the types and quantities of paper used, and a record of printing activity by user or department.

Further, the cost of a black & white page is as low as many mono laser printers, so you can use the C9800 Series printers for all of your business printing.

The C9800 Series. High-quality, consistent color from OKI Printing Solutions—the ideal business printer for your demanding, color-centric workgroup environment.

C9800 Series At-a-Glance



The easy-to-read, easily accessible operator panel of the C9800 Series: it tilts up for user convenience, and features a bright text-and-graphics LCD display.



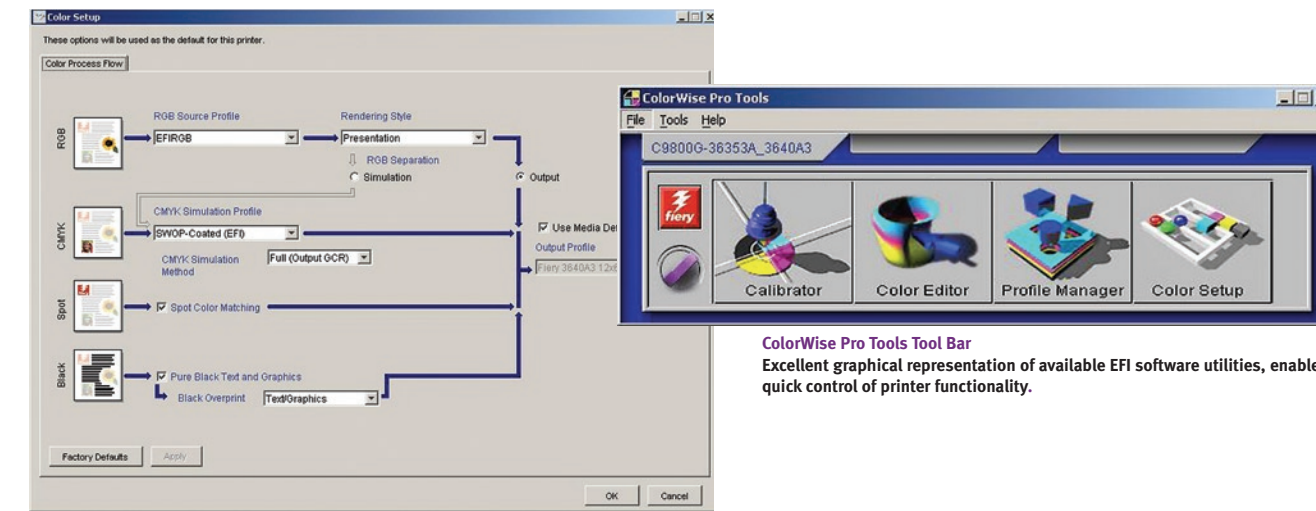
C9800 Series Operator Panel in "flat" or "down" position.



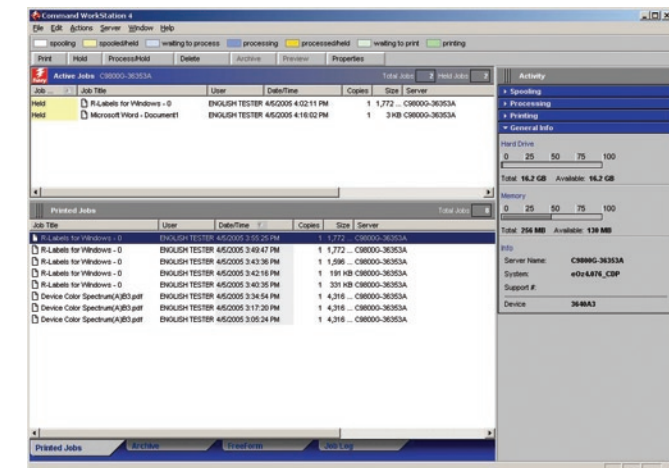
C9800 Series Operator Panel can be tilted upwards to various angles (up to 90°) for greater convenience.

Color matching and job management utilities from EFI, the world leader in color controller technology.

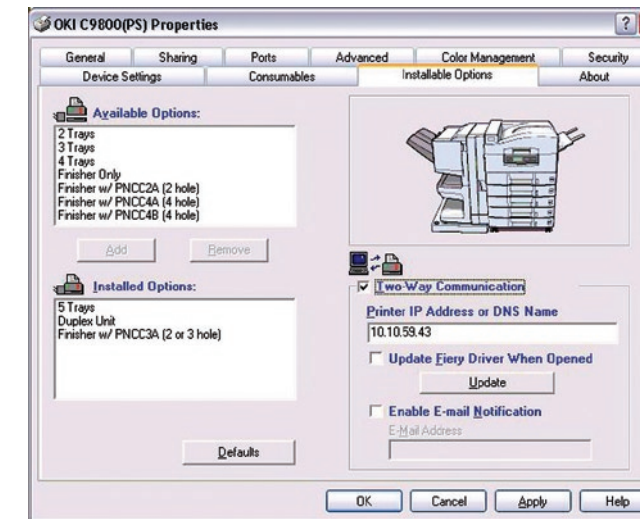
Both models in the C9800 Series come with EFI Fiery® technology and EFI color matching/job management utilities—which makes them the perfect solution for advertising agencies, design firms, marketing communications departments, even commercial printers.



EFI ColorWise™ Pro Tools
Easy-to-use color management software suite for producing consistently precise colors from all applications, platforms and file formats. Allows administrator to access and effect color management by the Fiery; manipulates each print job according to global (previously established) standards and job-specific settings.



EFI Command WorkStation™ 4
Automatically identifies and displays information about Fiery printers on the network; enables operators and administrators to track and manage jobs, and oversee job flow through the Fiery.



EFI Fiery Driver
Intuitive and easy to use—access information on your C9800 Series printer.



¹ Published performance results based on laboratory testing. Individual results may vary.
² Standard on C9800hdn model.
³ Available in the U.S. and Canada only.

¹ Published performance results based on laboratory testing. Individual results may vary.
² Standard on C9800hdn model.